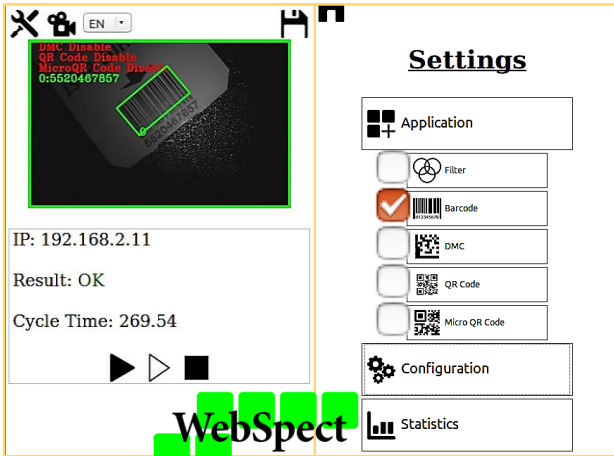




# Smart Camera For Machine Vision Applications

## SmartX-AZ Series



**SMARTX- AZNano series**



**SMARTX- AZM series**

- 1D/2D Traceability
- Components Absence & Presence Check
- Alignment & Robot Guidance

**WebSpect software** is integrated in **SmartX- ARM series** can deliver a rugged and highly flexible machine vision solution with good cost value and ease of use in a compact form factor. It offers 1D/2D code reading, Absence/Presence Checker & alignment with high computing speed and flexibility.

Description	SmartX-AZNano Series		SmartX-AZM Series		
Processor Type	ARM Cortex A9, 866MHz Duo-Core CPUs		ARM Cortex A9, 866MHz Duo-Core CPUs		
Memory / Storage	512 MB DDR3 RAM & 4GB Flash		1 GB DDR3 RAM & 4GB Flash		
Image Sensor	0.3MP	1.3MP	0.3MP	1.3MP	5.0MP
Resolution	640 X 480	1280 X 960	752 X 480	1280 X 960	2592 X 1944
Sensor Size	1/3 CMOS	1/3 CMOS	1/3 CMOS	1/3 CMOS	1/2.5 CMOS
Frame Rate	90fps	45fps	60fps	45fps	13fps
Ethernet Port	10/100M		10/100M		
Communication Port	TCP / UDP		RS232 / TCP / UDP		
Isolated I/Os	2IN / 2OUT		1 TRIGGER / 4IN / 4OUT configurable		
Lighting Control	Embedded Lighting		External 0 to 350mA Driver		
Power Supply	9 to 30VDC, 1.5W		9 to 30VDC, 2W		
Dimension	20 X 20 X 60mm		64 X 47 X 29mm		
Weight	50gm		120gm		