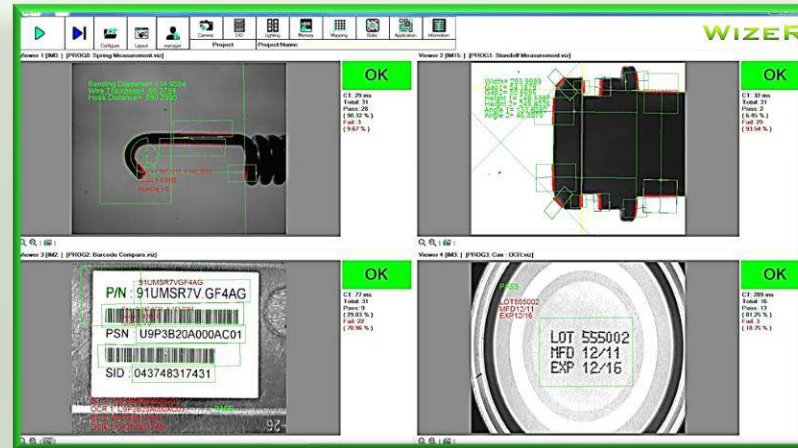


THE EVOLUTION OF MACHINE VISION SYSTEMS



ControlX-2100G

High-Speed, Compact Embedded Controller For Machine Vision Application

VISION CONTROLLER SELECTABLE FOR YOUR VISION APPLICATION



**High Performance
Machine Vision Controller**








	CX2100G
System Core	
CPU	Intel® Apollo Lake Atom CPU J3455E
Memory	4GB RAM
Storage	64G (SSD)
Operating System	
OS	Windows 10 IoT Ent (64bit)
Graphic	
Display	1 x HDMI
Camera Interface	
GigE	2-CH Gigabit (POE)
I/O	
Ethernet	2 x GbE ports
DI/O	8 DI, 8 DO
Lighting Control	2 x Channel
USB	2x USB2.0, 2 x USB3.0 & 1 x USB2.0 internal
Serial	1 x RS-232
Power Supply	
DC	24V DC
Physical	
Dimension	175 x 126 x 60mm (W x H x D)
Weight	~2.4KG
Certification/EMC	CE/FCC/RoHS



A SMARTER CHOICE FOR YOUR MACHINE VISION NEEDS

VISION CONTROLLER SELECTABLE FOR YOUR VISION APPLICATION

ControlX- 2100G

Model	Specification	No. of camera supported					
		1.3MP	2.0MP	5.0MP	10MP	12MP	20MP
ControlX-2000G 	CPU J3455, 1.5-2.3GHz Quad Core, 4GB RAM, 64GSSD, 4-LAN, 8I/8O, 2CH Light Control with Win 10 IOT	 1 - 3 Camera	 1 - 2 Camera	 1 - 2 Camera	 1 - 2 Camera	 1 Camera	 1 Camera



A SMARTER CHOICE FOR YOUR MACHINE VISION NEEDS

Contact us

Corporate Headquarter (Singapore)

Inspiraz Technology Pte Ltd

Blk 19, Kallang Avenue, #06-163

Singapore 339410

Website: www.vizcam.net

Tel: +65 6297 0880

Email: sales@inspiraz.com

China Headquarter (Shanghai)

启毅视觉科技（上海）有限公司

上海市静安区梅园路228号（企业广场

）2618室

网址: www.inspiraz.cn

Tel: +86-021-52990181

Email: sales@inspiraz.cn

China Office (Shenzhen)

深圳市南山区海德一道佳嘉豪苑

Email: sales@inspiraz.cn

Korea Office (Seoul)

#1109, B Building 201 SongPa-Gu,

Seoul, Korea 05854

Tel: +82-2-2264-2563~5

Email: sales@vizcam.co.kr